

## LEADERSHIP



**Prof. Dimitrios Fotiadis**

University of Ioannina,  
Greece (UOI)  
Project Coordinator



**Prof. Giuseppe Curigliano**

European Institute of Oncology,  
Italy (IEO)  
Scientific Manager



**Prof. Kostas Marias**

Foundation for Research and  
Technology, Greece (FORTH)  
Technical Manager



**Prof. Gabriella Pravettoni**

European Institute of Oncology,  
Italy (IEO)  
Clinical Study Manager

## CONSORTIUM

To execute the project, a high quality consortium has been assembled consisting of a multidisciplinary group of scientists including clinical cardiologists, oncologists, psychologists, geriatricians, pharmacologists, molecular biologists, bioinformaticians, and IT experts.



-  /CardiOCare.eu
-  /CardiOCare\_eu
-  /cardiocare-eu
-  [cardiocare-project.eu](http://cardiocare-project.eu)
-  [info@cardiocare-project.eu](mailto:info@cardiocare-project.eu)

# CARDIO TOXICITY



**...be informed!**

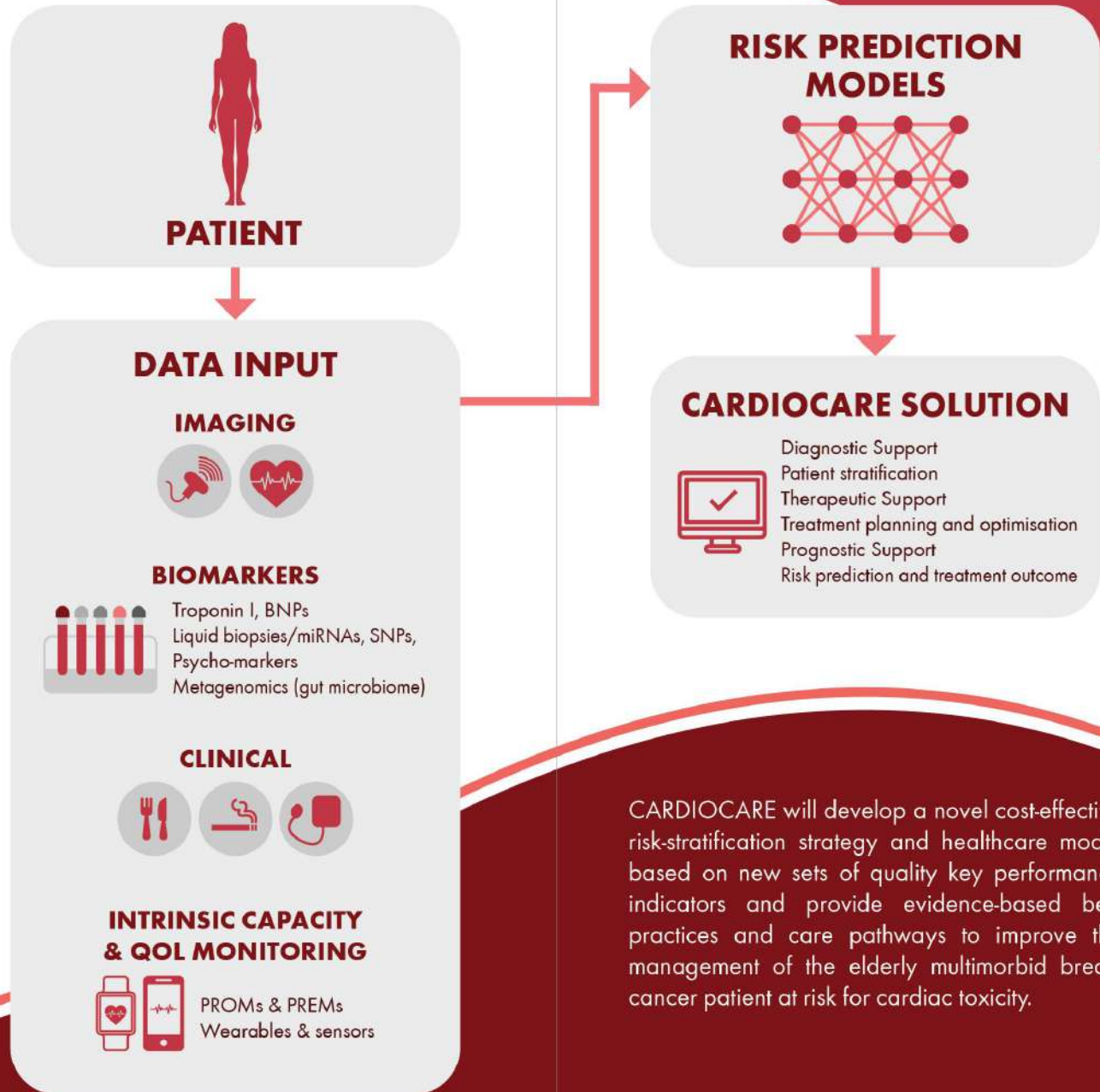
Although breast cancer mortality rates have been declining each year in Europe for two decades, the number one cause of death for women with breast cancer is **cardiotoxicity**. Adding further complexity to the management and care of this population, **50%-60%** of the newly diagnosed breast cancer patients are **older than 65 years** of age. This elderly group of patients is particularly susceptible to co-morbid cardiotoxicity induced by cancer treatment due to **age-related risk factors, pre-existing heart disease** and a **high prevalence of multiple co-morbidities**.



CARDIOCARE will exploit its unique registries of elderly breast cancer patients and perform a new multi-centre clinical trial to implement an **interdisciplinary** and **patient-oriented eHealth approach** for assessing the efficacy of behavioral and psychological interventions on cardiotoxicity, intrinsic capacity and QoL.

**Large data sets** of high quality retrospective and prospective data will be collected including clinical, imaging, -omics, biomarker, psycho-marker, intrinsic capacity, wearable sensor, and eHealth application data and by employing machine learning approaches.

# VISION



CARDIOCARE will develop a novel cost-effective risk-stratification strategy and healthcare model based on new sets of quality key performance indicators and provide evidence-based best practices and care pathways to improve the management of the elderly multimorbid breast cancer patient at risk for cardiac toxicity.